



# Abstract

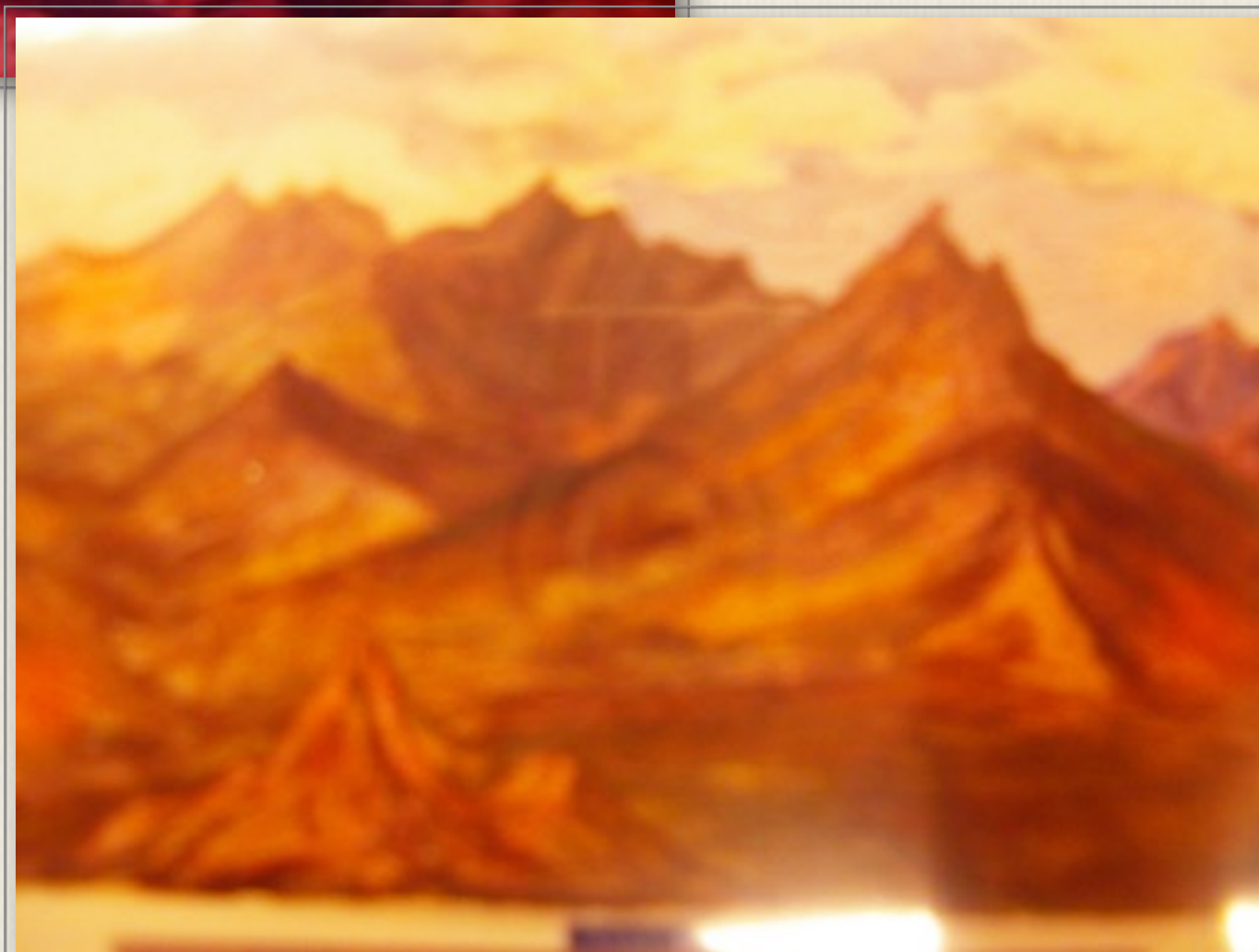
Lehmann didn't sing avant guard 20th-century music and her drawing styles also tended to be conservative. But as you'll see on the following pages, she could explore the world of abstract art.



A rather abstract painting of the Marschallin



Even scenes in nature  
could end up in a rather  
abstract manner







LL's imagination always  
at work/play







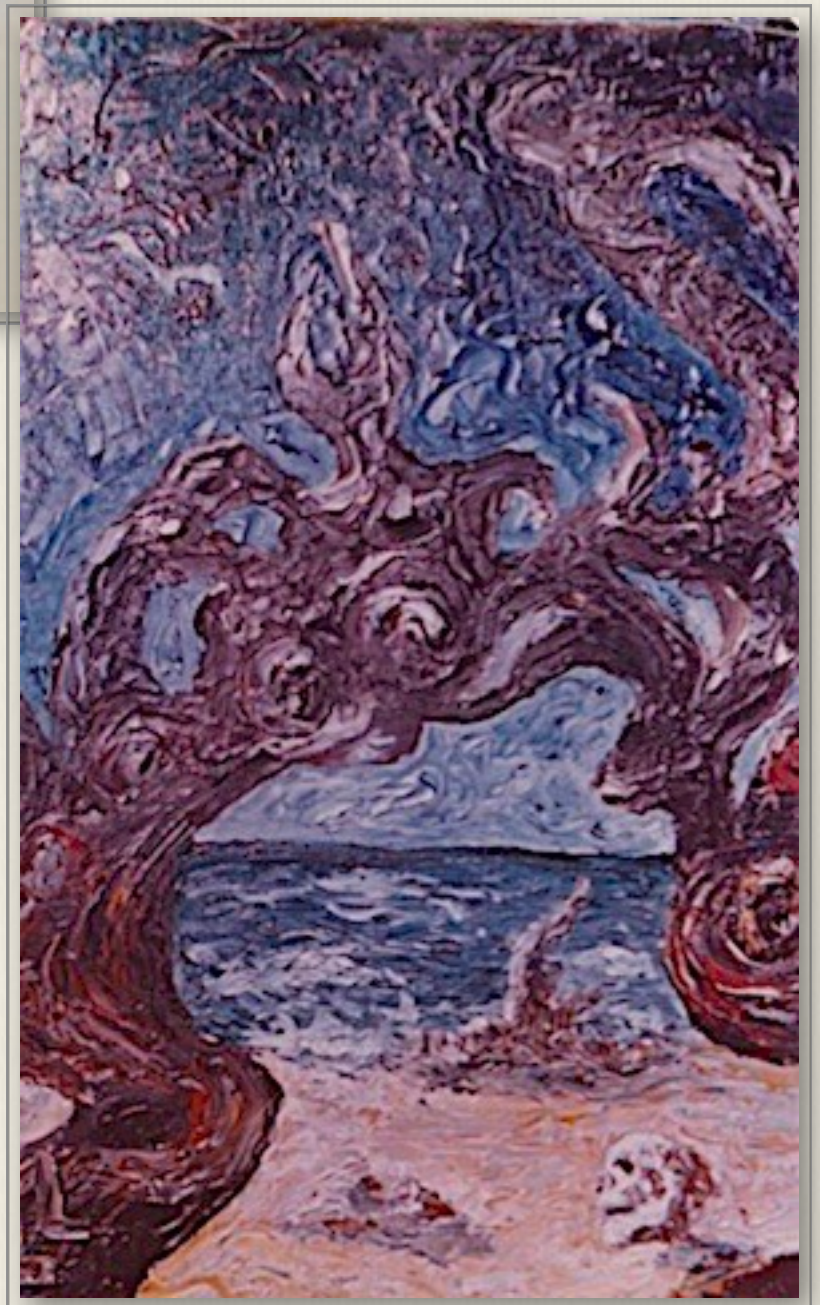
A fairy realistic banana flower above and some humanized rocks below







If you feared that LL's  
artist creativity might ever  
wane, guess again.







This fired tile has a 1940s abstract feeling.





A rather ominous scene