



Portraits

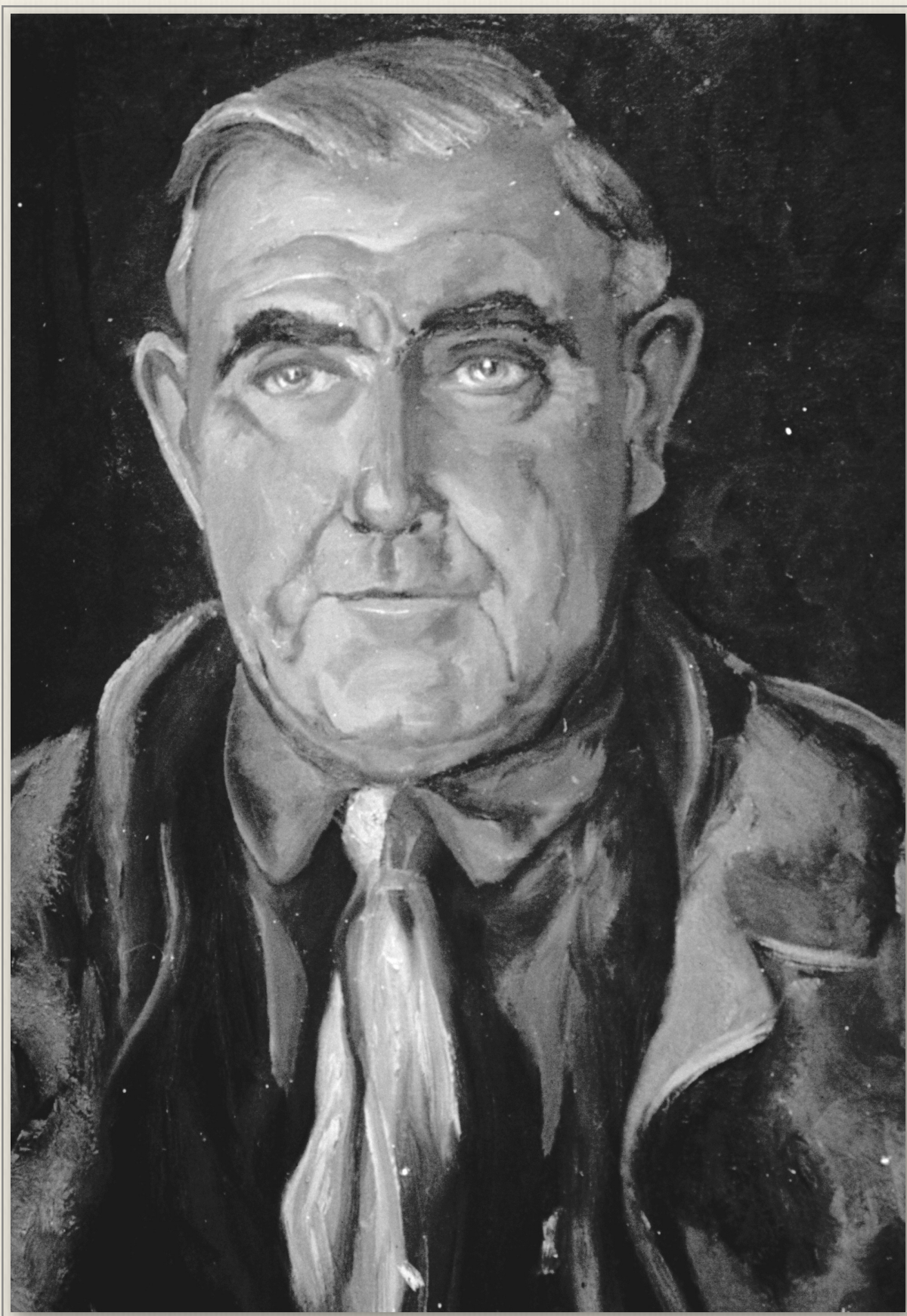


Two Metropolitan Opera singers: Mme Lehmann paints a portrait of mezzo soprano Risë Stevens when the latter visits Santa Barbara.

Lehmann delighted in painting portraits whether of her family, friends, colleagues, or historic figures. The results are varied: from faithful representation to cartoon-like.



Lehmann paints a portrait of the Virgin in 1942, far earlier than we knew.



LL's brother Fritz



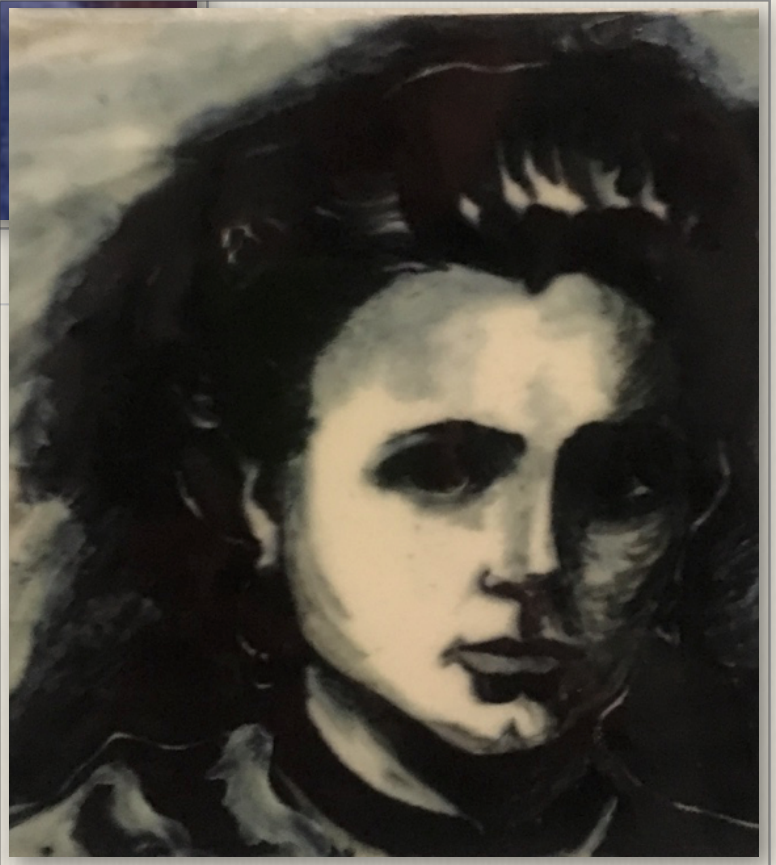
Lehmann's father in his youth



Lehmann's father in old age



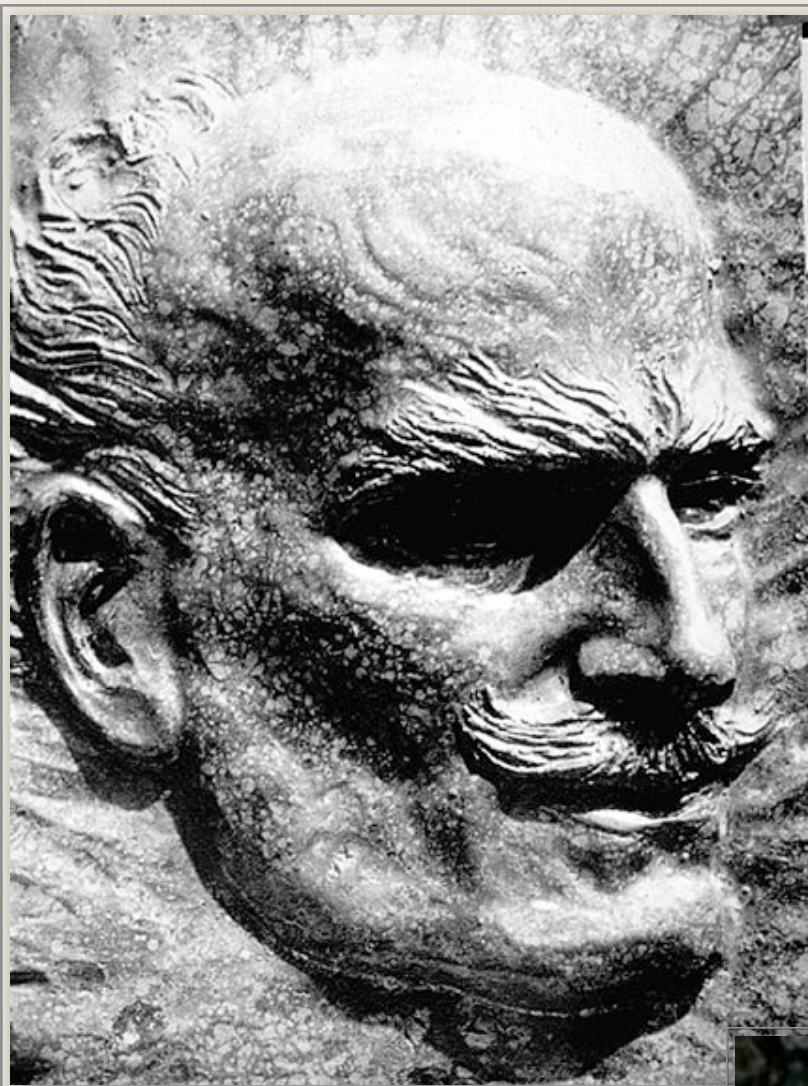
Lehmann's aging mother



Lehmann's tile depiction of her youthful mother



Lehmann's mother in bas relief



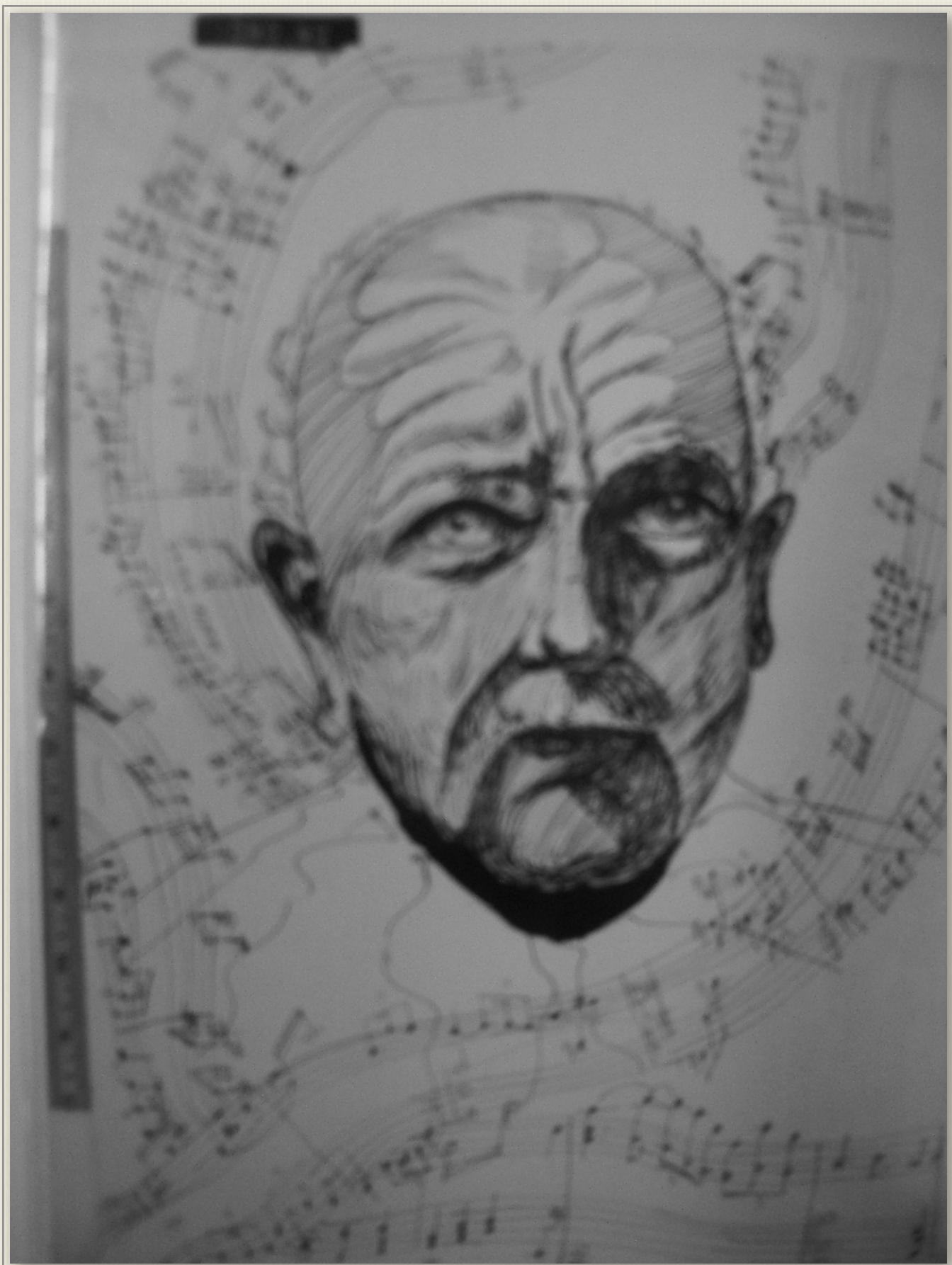
Lehmann's bas relief of Maestro (Arturo Toscanini). Below you see an oil painting of the conductor and a third depiction (as a drawing) that Lehmann is holding.



Two of Lehmann's paintings
of composer/conductor
Richard Strauss.

The following page shows a
drawing of the great man
surrounded by his music.





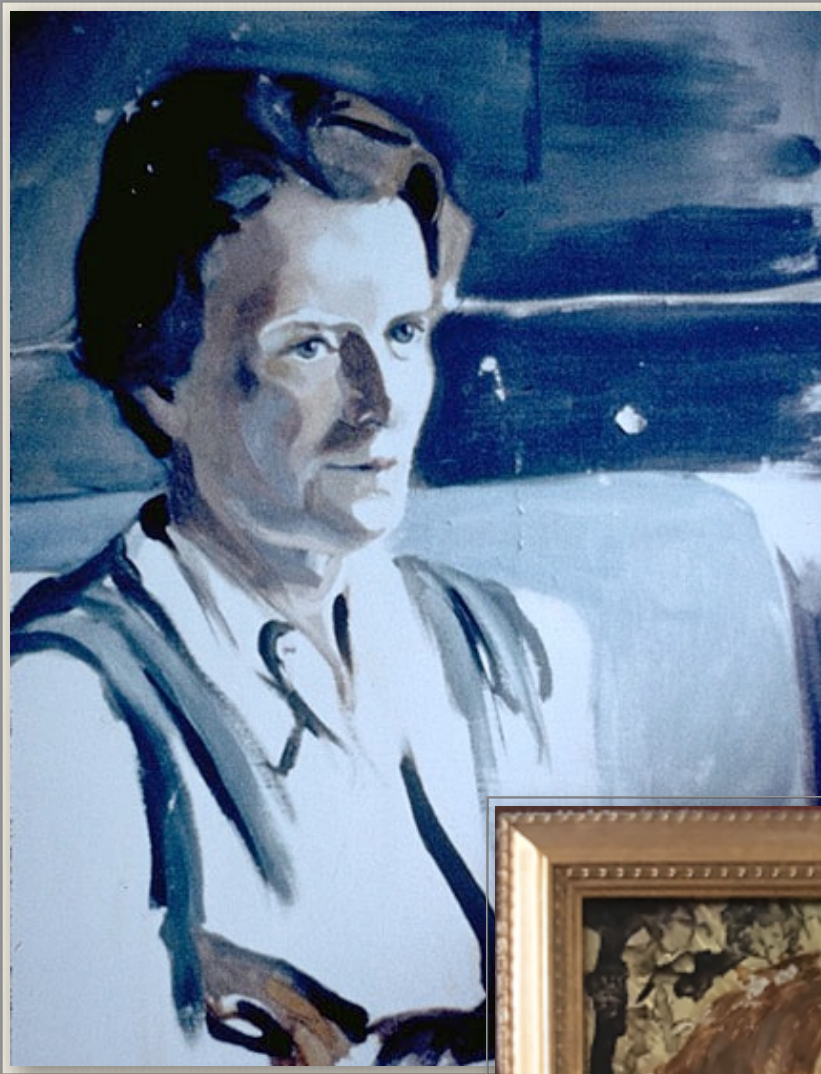


Lehmann's Beethoven



Frances was always handy as a model so Lehmann could experiment with various media.





The top portrait of Frances is incomplete, but is really excellent. The portrait below seems over worked by comparison.





Viola Douglas, one of Lehmann's closest friends



A line drawing of one of her students, Benita Valente



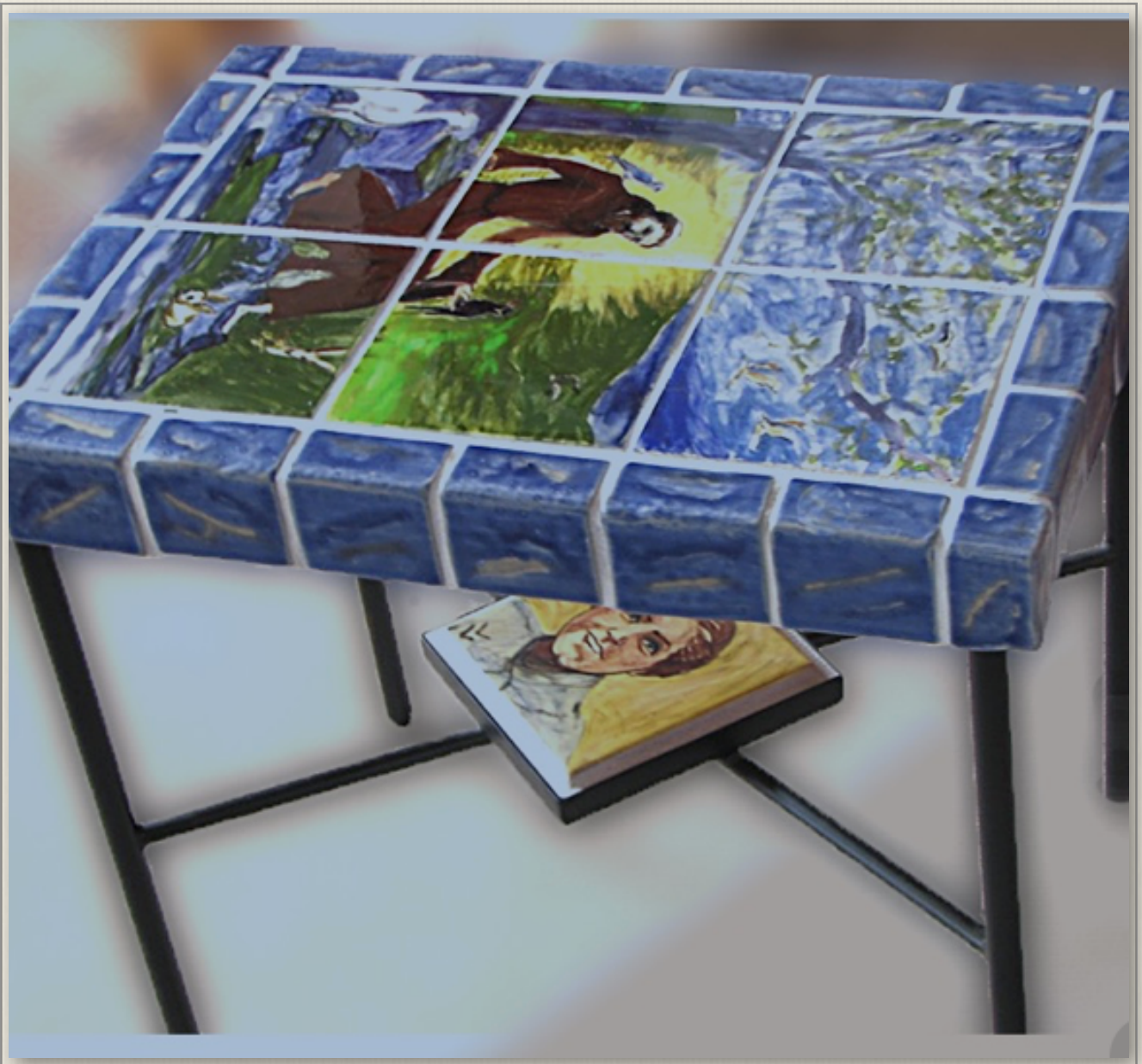
Grace Bumbry



Benita again



The first Bess in *Porgy & Bess*, Ann Brown, studied with Lehmann.



St. Frances surrounded by birds and animals and self-portrait below



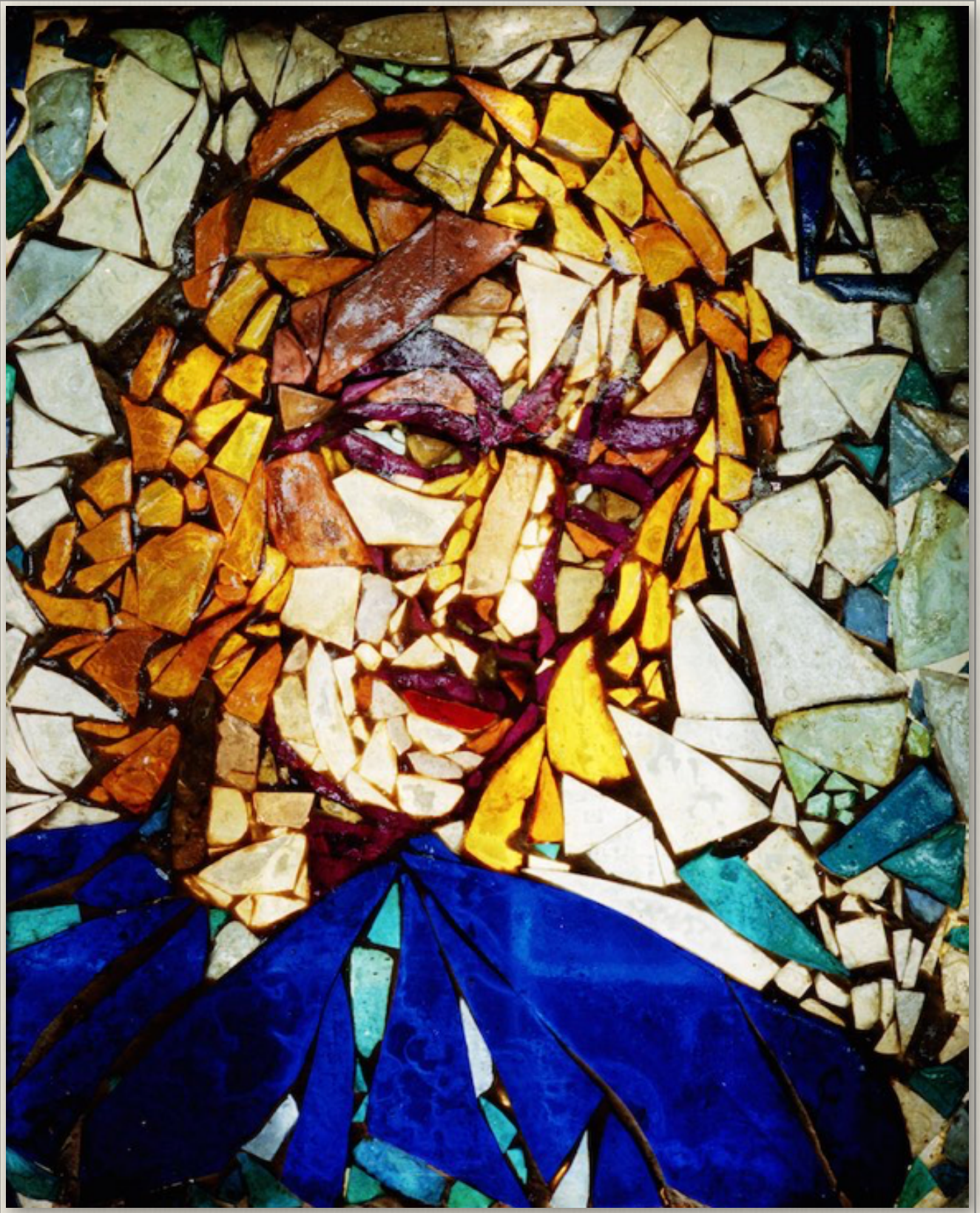
Self portrait



Portraits of some of LL's beloved dogs



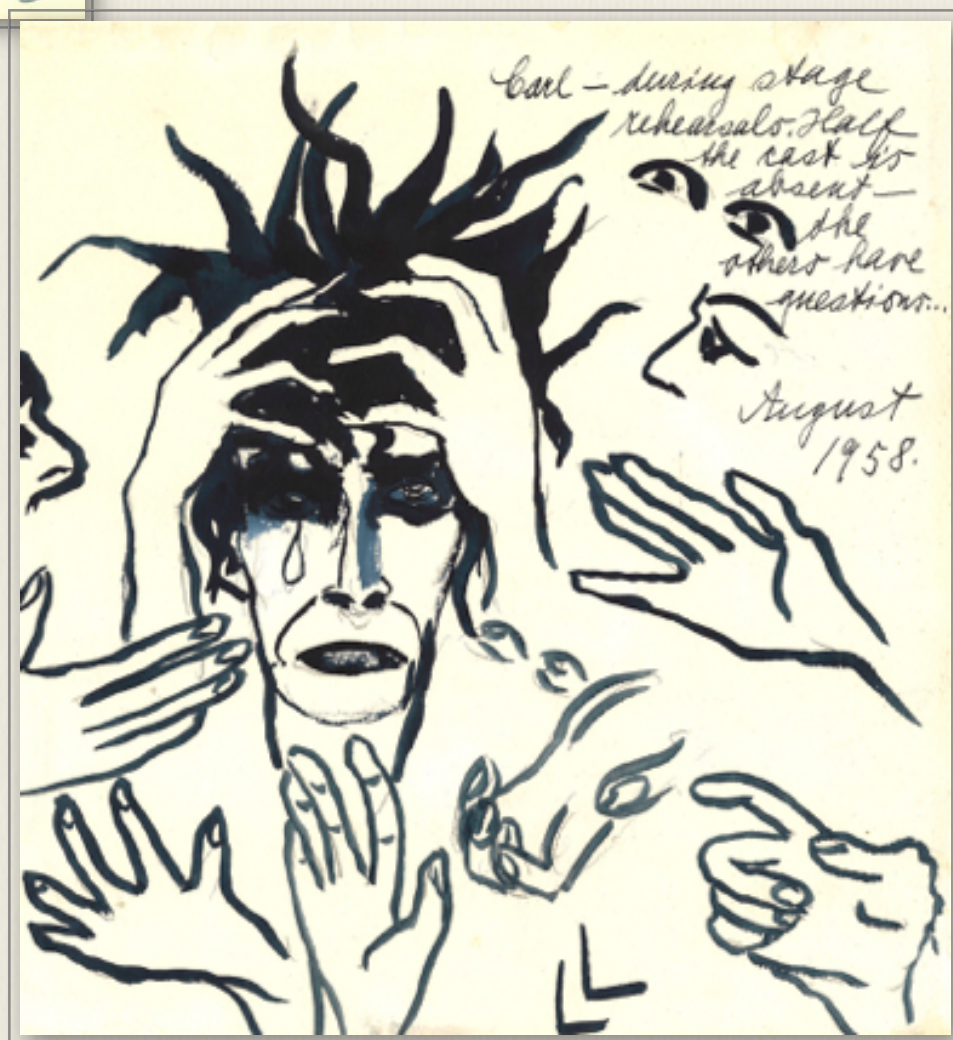
Though not a Catholic, Lehmann had spent a lot of time in Austria and was inspired by the art of the Church.



A rather abstract portrait; an angel?



Two cartoons featuring LL's assistant at the MAW, Carl Zytowski. He was stage manager, chorus director, coach, and everything else LL needed, not just with *Arabella* and *Der Rosenkavalier*, but with almost all of the operas she produced.





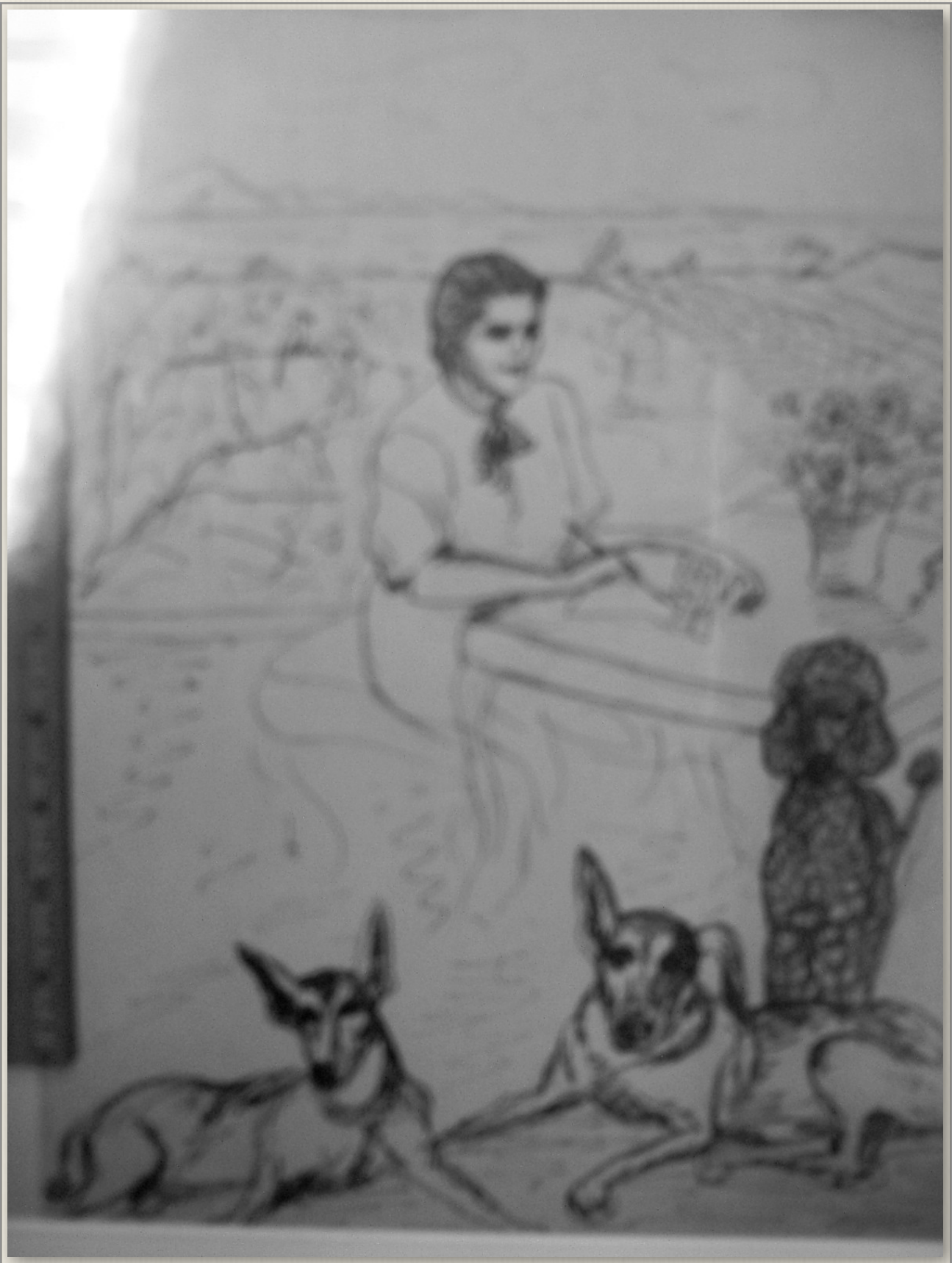
Above: Two idiots playing Scrabble. LL observes Frances and student Luba Tcheresky.

Below: LL's pianist Ernő Balogh





LL's cartoon of Goering?



An out-of-focus scan of LL with her dogs